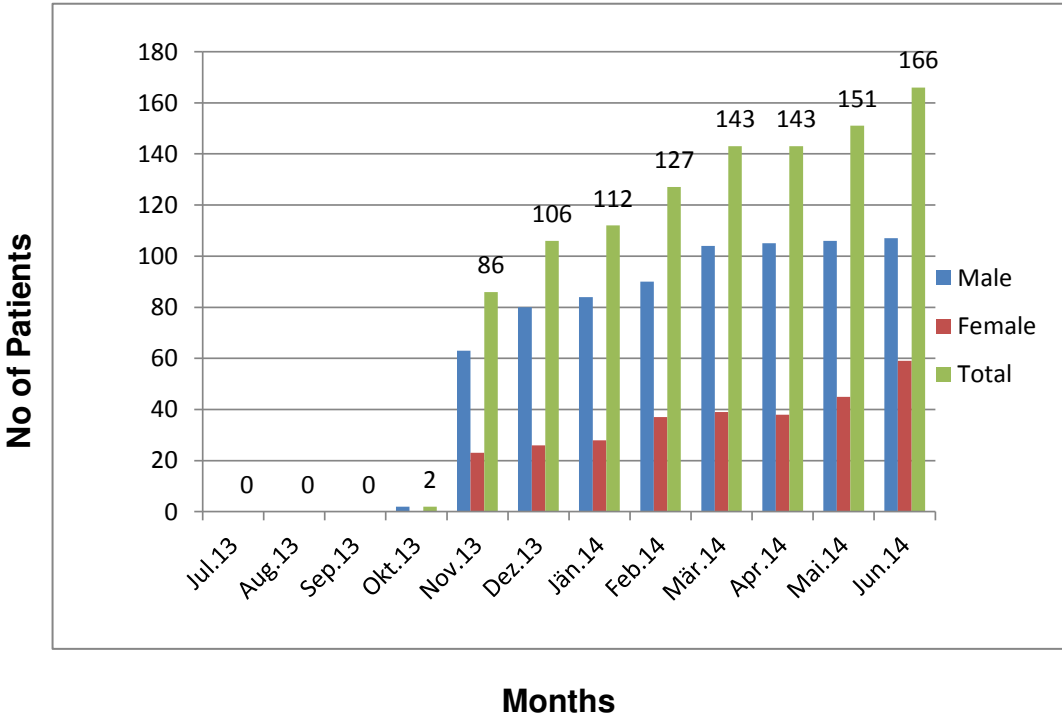


Summary of Angiography

S.No	Month & Year	Male	Female	Total
1	Jul.13	0	0	0
2	Aug.13	0	0	0
3	Sep.13	0	0	0
4	Okt.13	2	0	2
5	Nov.13	63	23	86
6	Dez.13	80	26	106
7	Jän.14	84	28	112
8	Feb.14	90	37	127
9	Mär.14	104	39	143
10	Apr.14	105	38	143
11	Mai.14	106	45	151
12	Jun.14	107	59	166
Total		741	295	1036

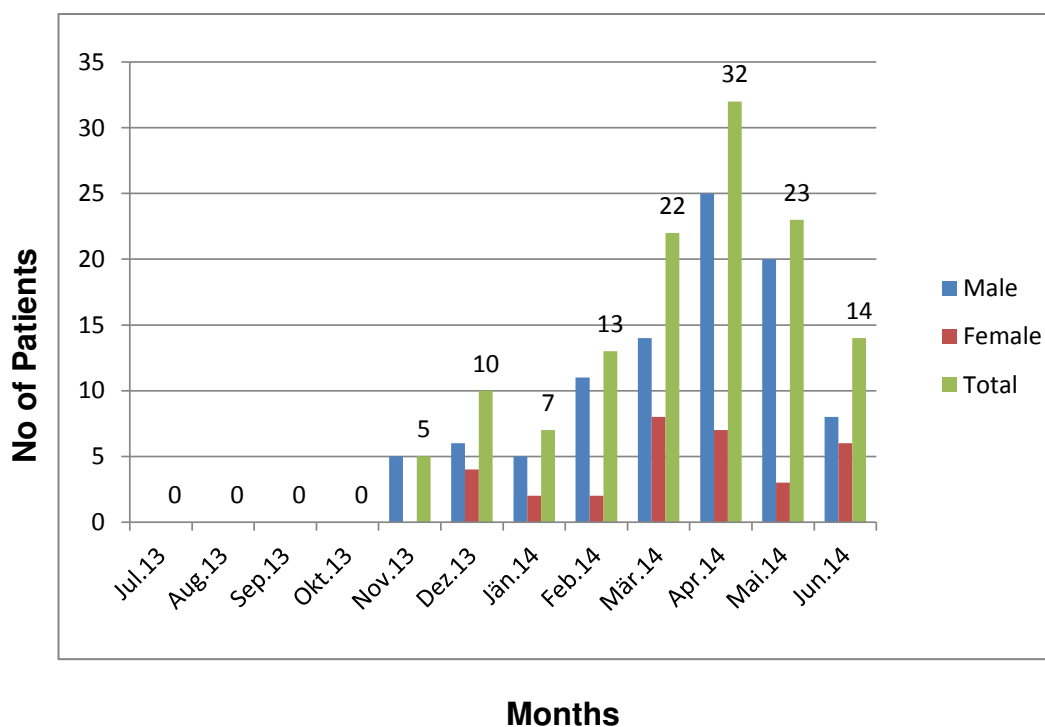
Summary of Angiography 1 July 2013 - 30 June 2014



Summary of Angioplasty

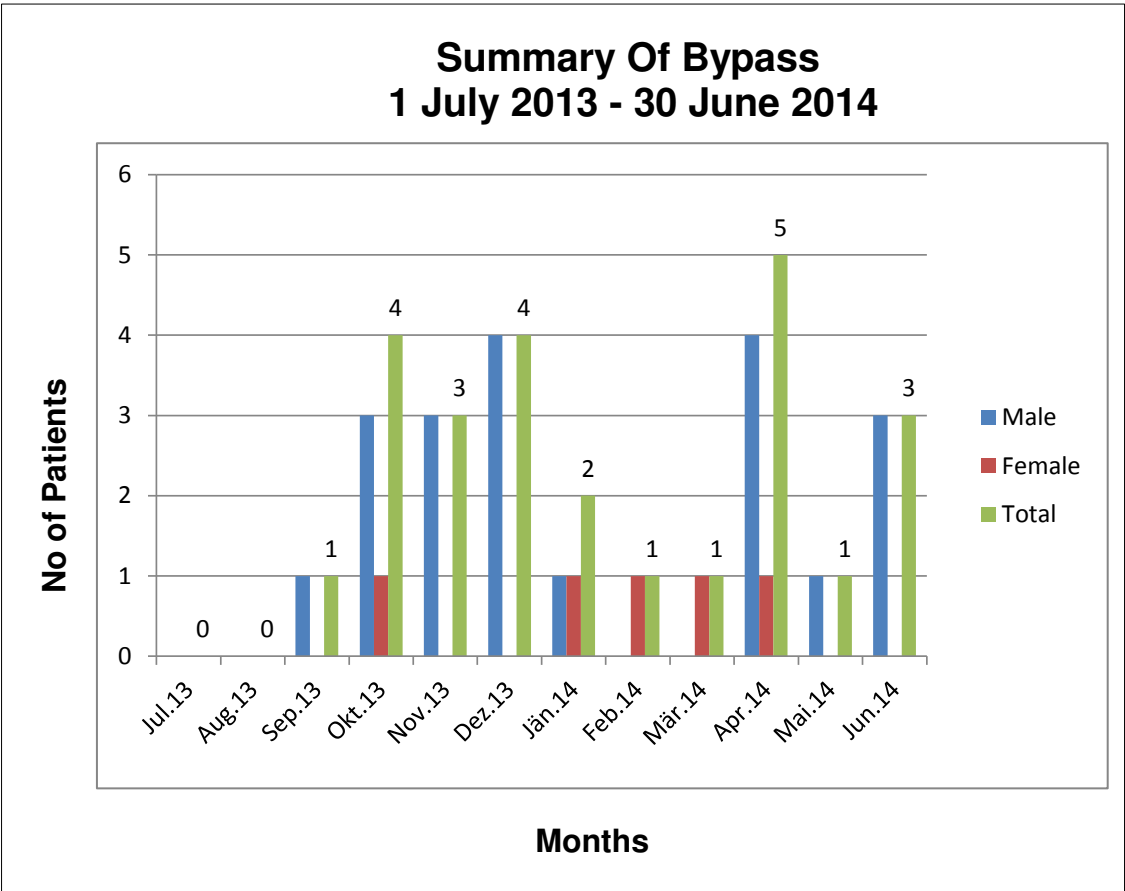
S.No	Month & Year	Male	Female	Total
1	Jul.13	0	0	0
2	Aug.13	0	0	0
3	Sep.13	0	0	0
4	Okt.13	0	0	0
5	Nov.13	5	0	5
6	Dez.13	6	4	10
7	Jän.14	5	2	7
8	Feb.14	11	2	13
9	Mär.14	14	8	22
10	Apr.14	25	7	32
11	Mai.14	20	3	23
12	Jun.14	8	6	14
Total		94	32	126

Summary of Angioplasty 1 July 2013 - 30 June 2014



Summary of Bypass

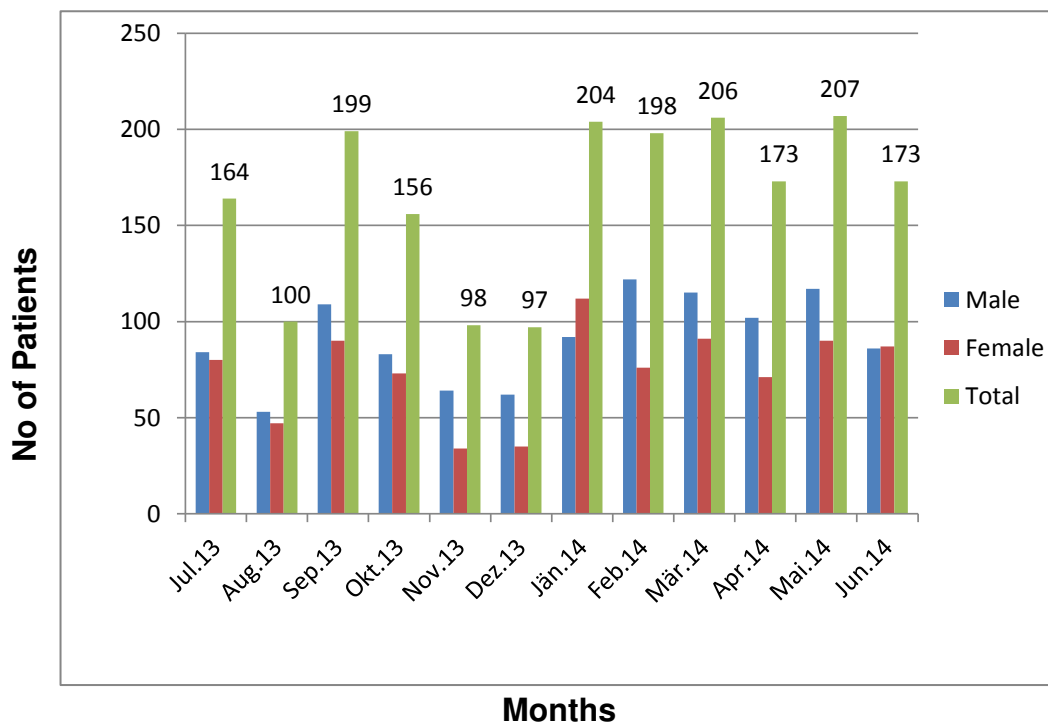
S.No	Month & Year	Male	Female	Total
1	Jul.13	0	0	0
2	Aug.13	0	0	0
3	Sep.13	1	0	1
4	Okt.13	3	1	4
5	Nov.13	3	0	3
6	Dez.13	4	0	4
7	Jän.14	1	1	2
8	Feb.14	0	1	1
9	Mär.14	0	1	1
10	Apr.14	4	1	5
11	Mai.14	1	0	1
12	Jun.14	3	0	3
Total		20	5	25



Summary of Thallium

S.No	Month & Year	Male	Female	Total
1	Jul.13	84	80	164
2	Aug.13	53	47	100
3	Sep.13	109	90	199
4	Okt.13	83	73	156
5	Nov.13	64	34	98
6	Dez.13	62	35	97
7	Jän.14	92	112	204
8	Feb.14	122	76	198
9	Mär.14	115	91	206
10	Apr.14	102	71	173
11	Mai.14	117	90	207
12	Jun.14	86	87	173
Total		1089	886	1975

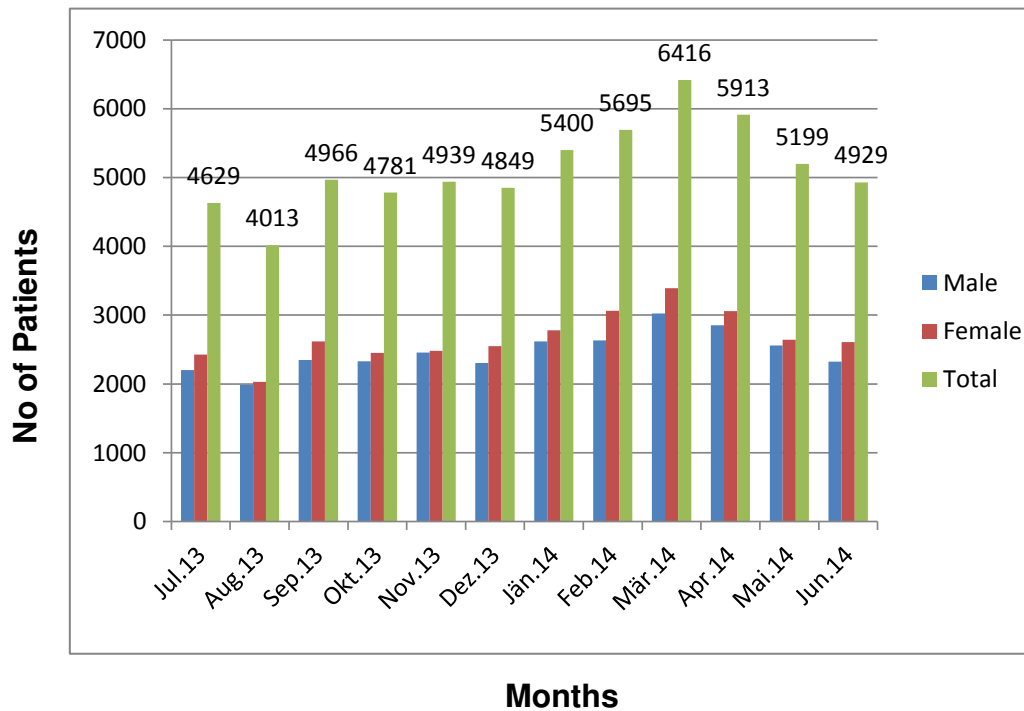
Summary Of Thallium 1 July 2013 - 30 June 2014



Summary of OPD

S.No	Month & Year	Male	Female	Total
1	Jul.13	2203	2426	4629
2	Aug.13	1985	2028	4013
3	Sep.13	2346	2620	4966
4	Okt.13	2331	2450	4781
5	Nov.13	2457	2482	4939
6	Dez.13	2302	2547	4849
7	Jän.14	2620	2780	5400
8	Feb.14	2631	3064	5695
9	Mär.14	3024	3392	6416
10	Apr.14	2853	3060	5913
11	Mai.14	2558	2641	5199
12	Jun.14	2322	2607	4929
Total		29632	32097	61729

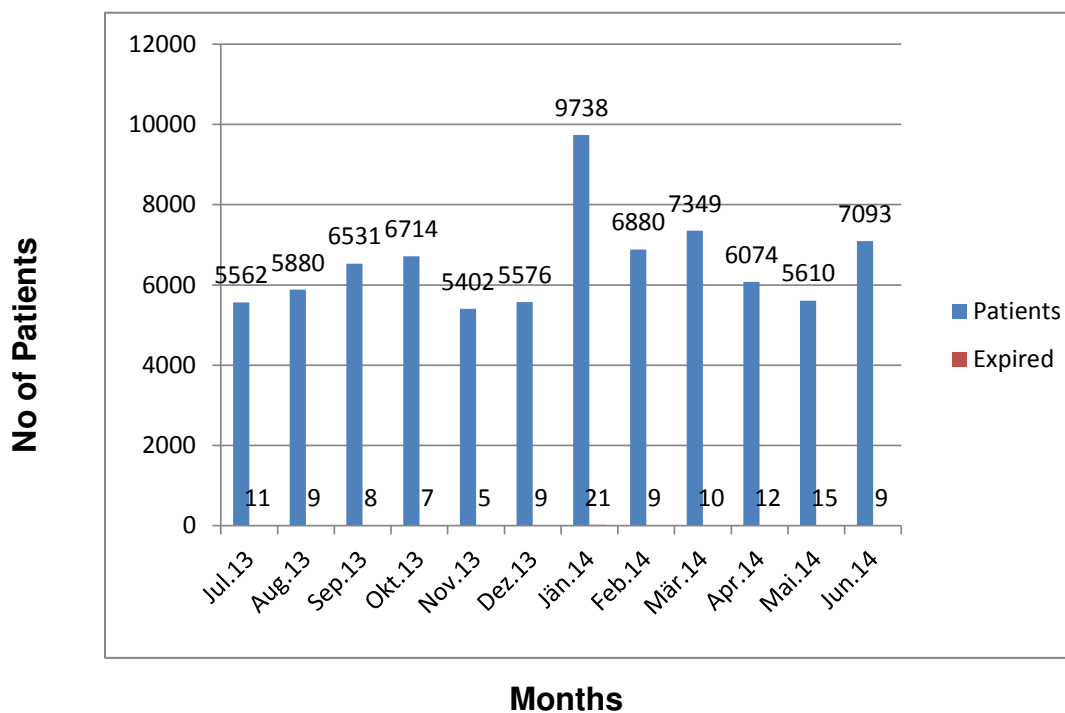
Summary Of O.P.D 1 July 2013 - 30 June 2014



Summary of ER

S.No	Month & Year	Patients	Expired	B.D	% of Exp
1	Jul.13	5562	11	51	0.1978
2	Aug.13	5880	9	63	0.1531
3	Sep.13	6531	8	54	0.1225
4	Okt.13	6714	7	66	0.1043
5	Nov.13	5402	5	47	0.0926
6	Dez.13	5576	9	69	0.1614
7	Jän.14	9738	21	117	0.2156
8	Feb.14	6880	9	58	0.131
9	Mär.14	7349	10	85	0.136
10	Apr.14	6074	12	74	0.1975
11	Mai.14	5610	15	57	0.2673
12	Jun.14	7093	9	56	0.1268
Total		78409	125	797	0.16

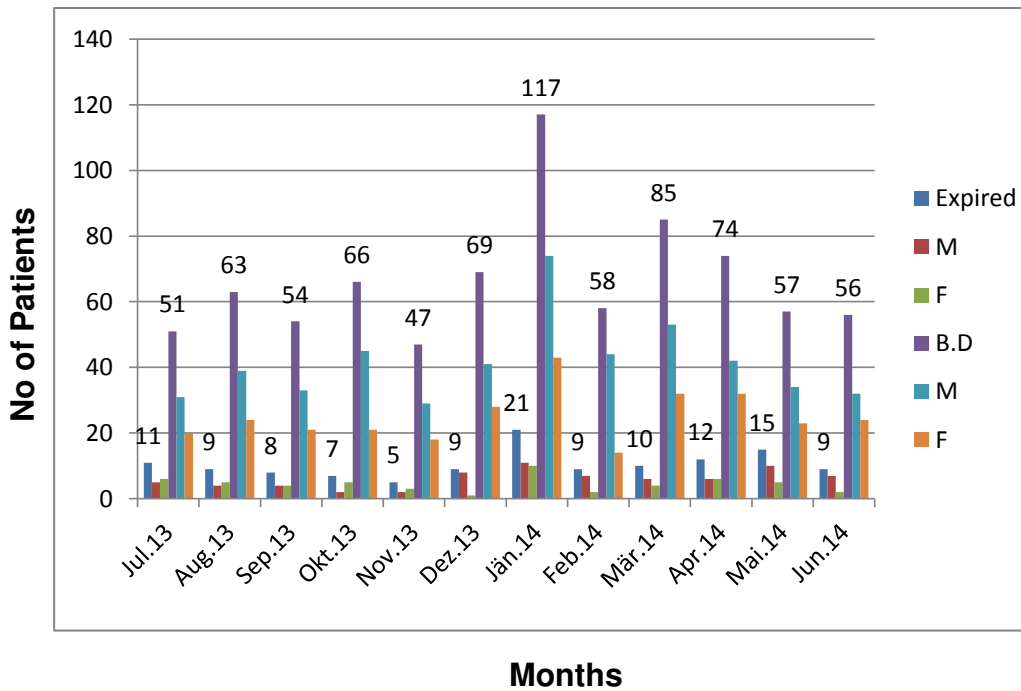
Summary Of E.R 1 July 2013 - 30 June 2014



Summary of ER (Expire & BD)

S.No	Month & Year	Expired	M	F	B.D	M	F
1	Jul.13	11	5	6	51	31	20
2	Aug.13	9	4	5	63	39	24
3	Sep.13	8	4	4	54	33	21
4	Okt.13	7	2	5	66	45	21
5	Nov.13	5	2	3	47	29	18
6	Dez.13	9	8	1	69	41	28
7	Jän.14	21	11	10	117	74	43
8	Feb.14	9	7	2	58	44	14
9	Mär.14	10	6	4	85	53	32
10	Apr.14	12	6	6	74	42	32
11	Mai.14	15	10	5	57	34	23
12	Jun.14	9	7	2	56	32	24
Total		125	72	53	797	497	300

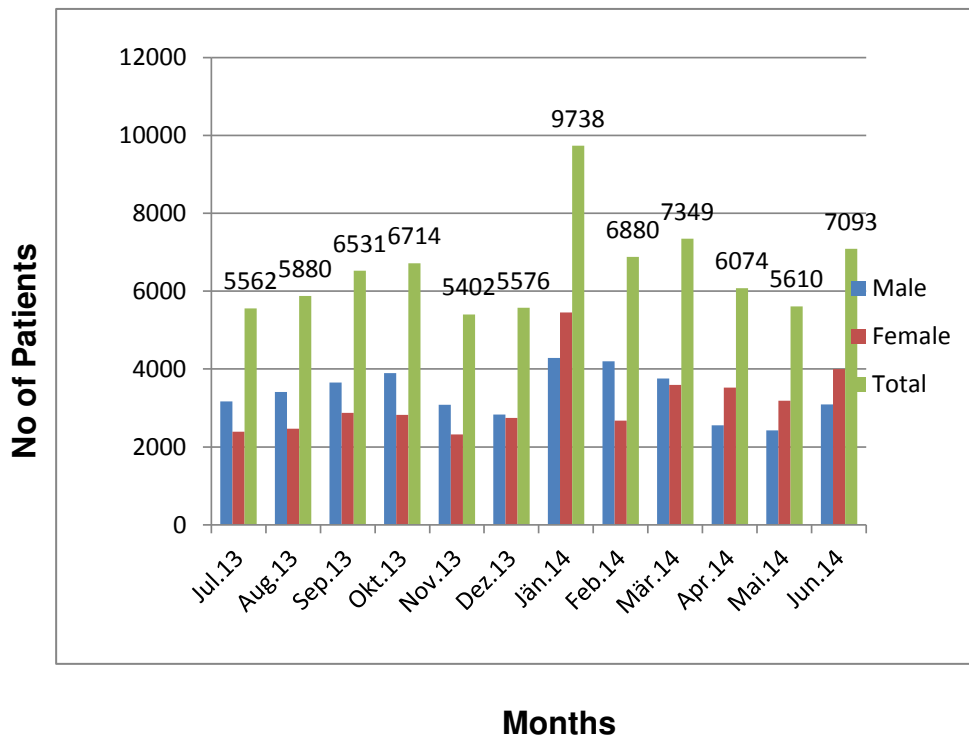
**Summary Of E.R(Expire & BD)
1 July 2013 - 30 June 2014**



Summary of ER

S.No	Month & Year	Male	Female	Total
1	Jul.13	3170	2392	5562
2	Aug.13	3410	2470	5880
3	Sep.13	3657	2874	6531
4	Okt.13	3894	2820	6714
5	Nov.13	3079	2323	5402
6	Dez.13	2833	2743	5576
7	Jän.14	4288	5450	9738
8	Feb.14	4200	2680	6880
9	Mär.14	3755	3594	7349
10	Apr.14	2552	3522	6074
11	Mai.14	2427	3183	5610
12	Jun.14	3094	3999	7093
Total		40359	38050	78409

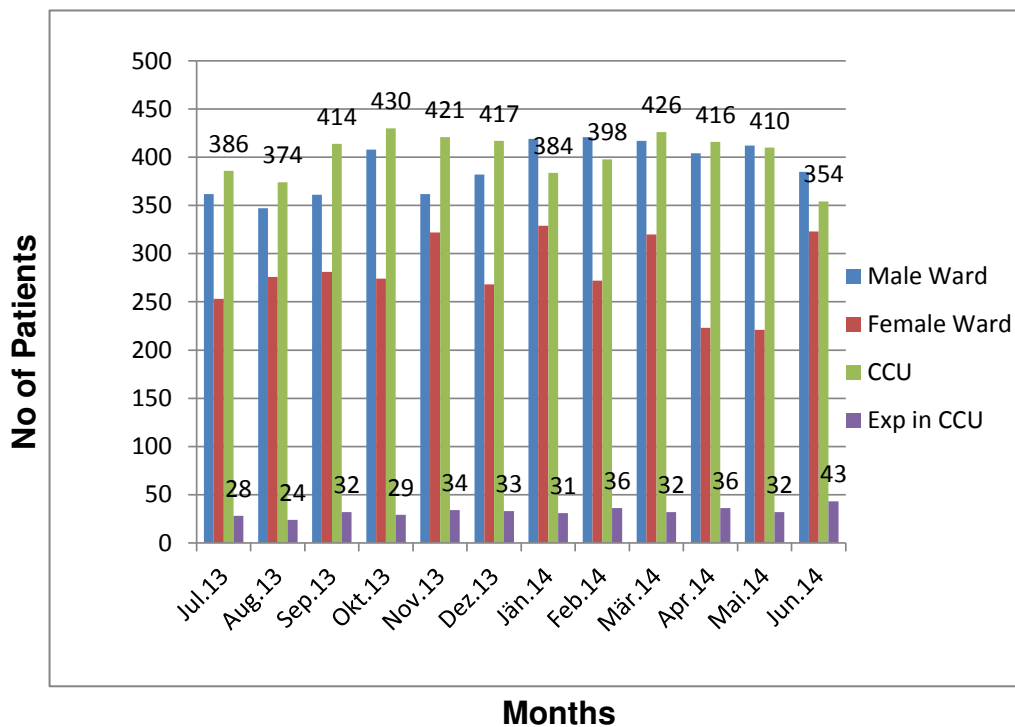
Summary Of E.R 1 July 2013 - 30 June 2014



Summary of Admission

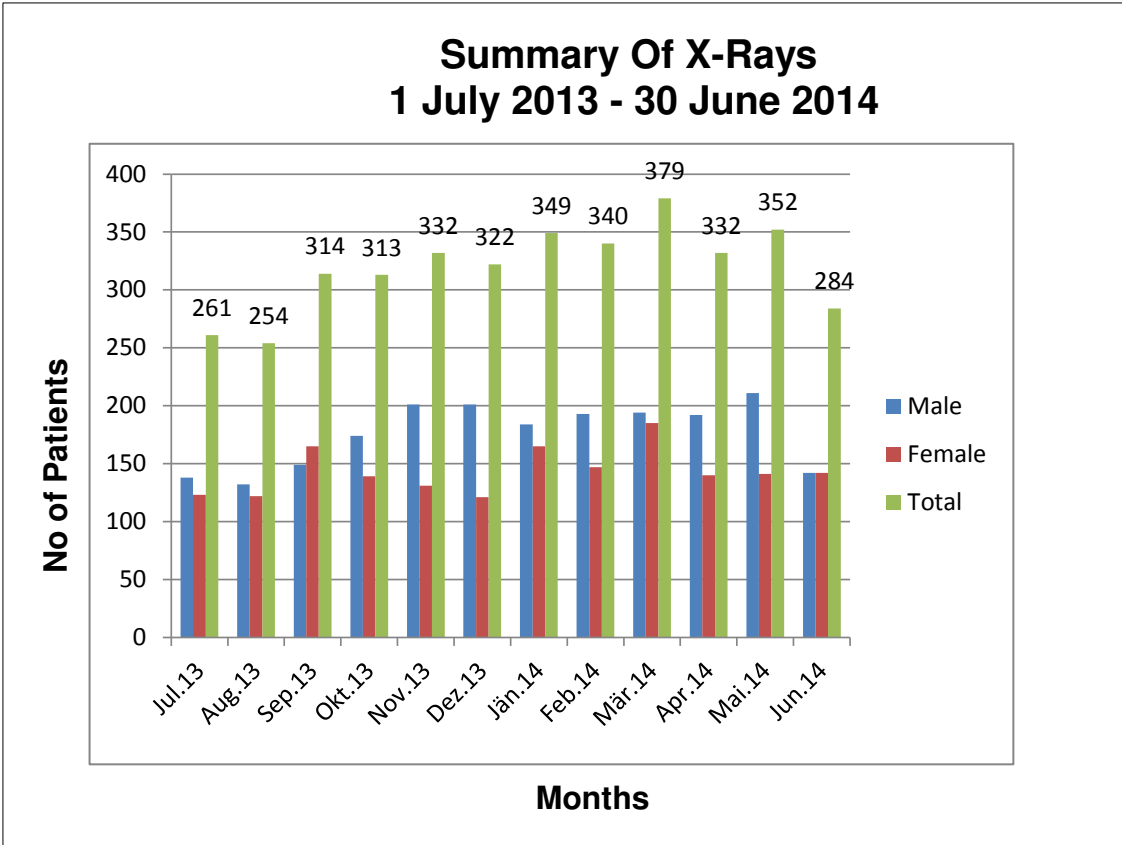
S.No	Month & Year	Male Ward	Female Ward	CCU	Exp in CCU
1	Jul.13	362	253	386	28
2	Aug.13	347	276	374	24
3	Sep.13	361	281	414	32
4	Okt.13	408	274	430	29
5	Nov.13	362	322	421	34
6	Dez.13	382	268	417	33
7	Jän.14	419	329	384	31
8	Feb.14	421	272	398	36
9	Mär.14	417	320	426	32
10	Apr.14	404	223	416	36
11	Mai.14	412	221	410	32
12	Jun.14	385	323	354	43
Total		4680	3362	4830	390

Summary Of Admission 1 July 2013 - 30 June 2014



Summary of X-Ray

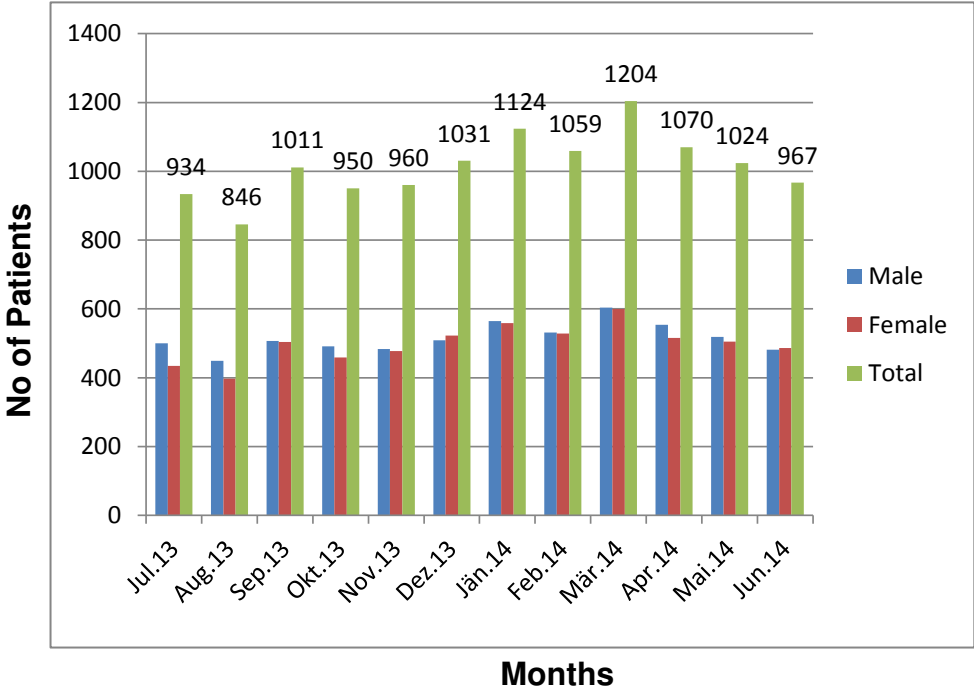
S.No	Month & Year	Male	Female	Total
1	Jul.13	138	123	261
2	Aug.13	132	122	254
3	Sep.13	149	165	314
4	Okt.13	174	139	313
5	Nov.13	201	131	332
6	Dez.13	201	121	322
7	Jän.14	184	165	349
8	Feb.14	193	147	340
9	Mär.14	194	185	379
10	Apr.14	192	140	332
11	Mai.14	211	141	352
12	Jun.14	142	142	284
Total		2111	1721	3832



Summary of Echo

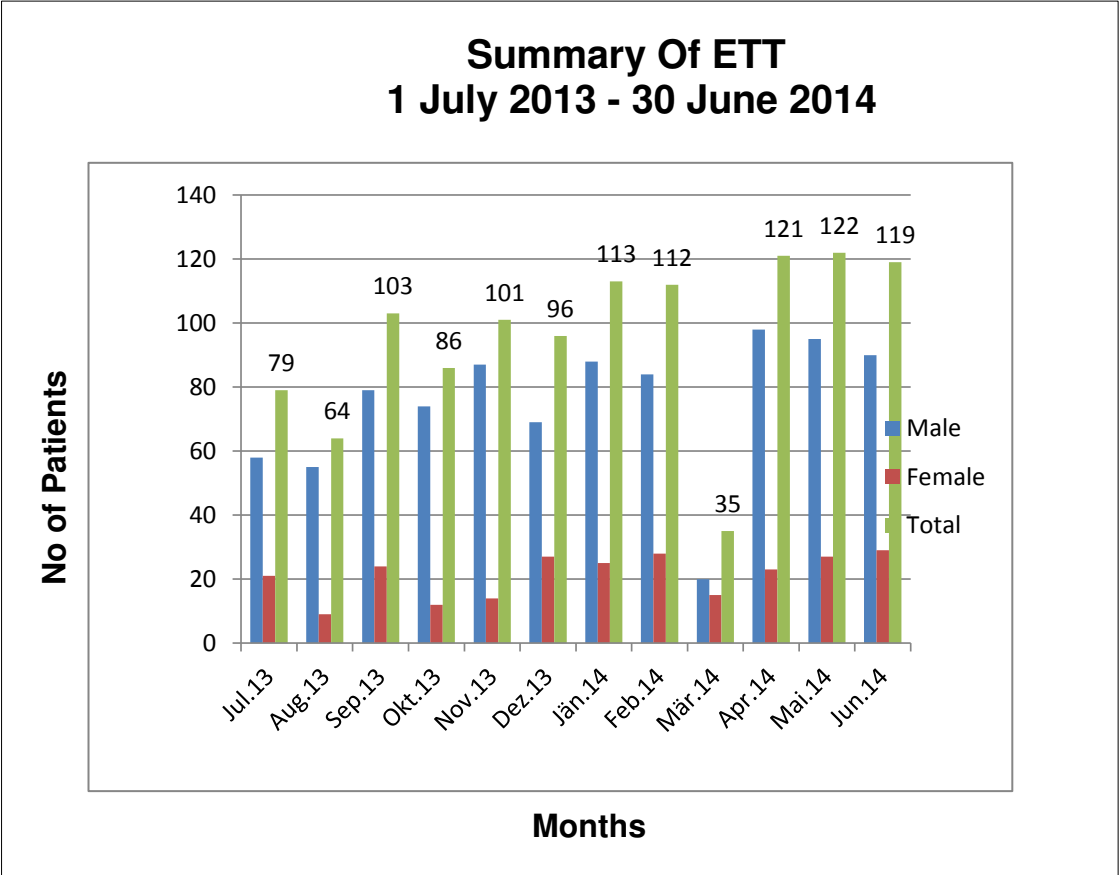
S.No	Month & Year	Male	Female	Total
1	Jul.13	500	434	934
2	Aug.13	449	397	846
3	Sep.13	507	504	1011
4	Okt.13	491	459	950
5	Nov.13	483	477	960
6	Dez.13	509	522	1031
7	Jän.14	565	559	1124
8	Feb.14	531	528	1059
9	Mär.14	604	600	1204
10	Apr.14	554	516	1070
11	Mai.14	519	505	1024
12	Jun.14	481	486	967
Total		6193	5987	12180

**Summary Of ECHO
1 July 2013 - 30 June 2014**



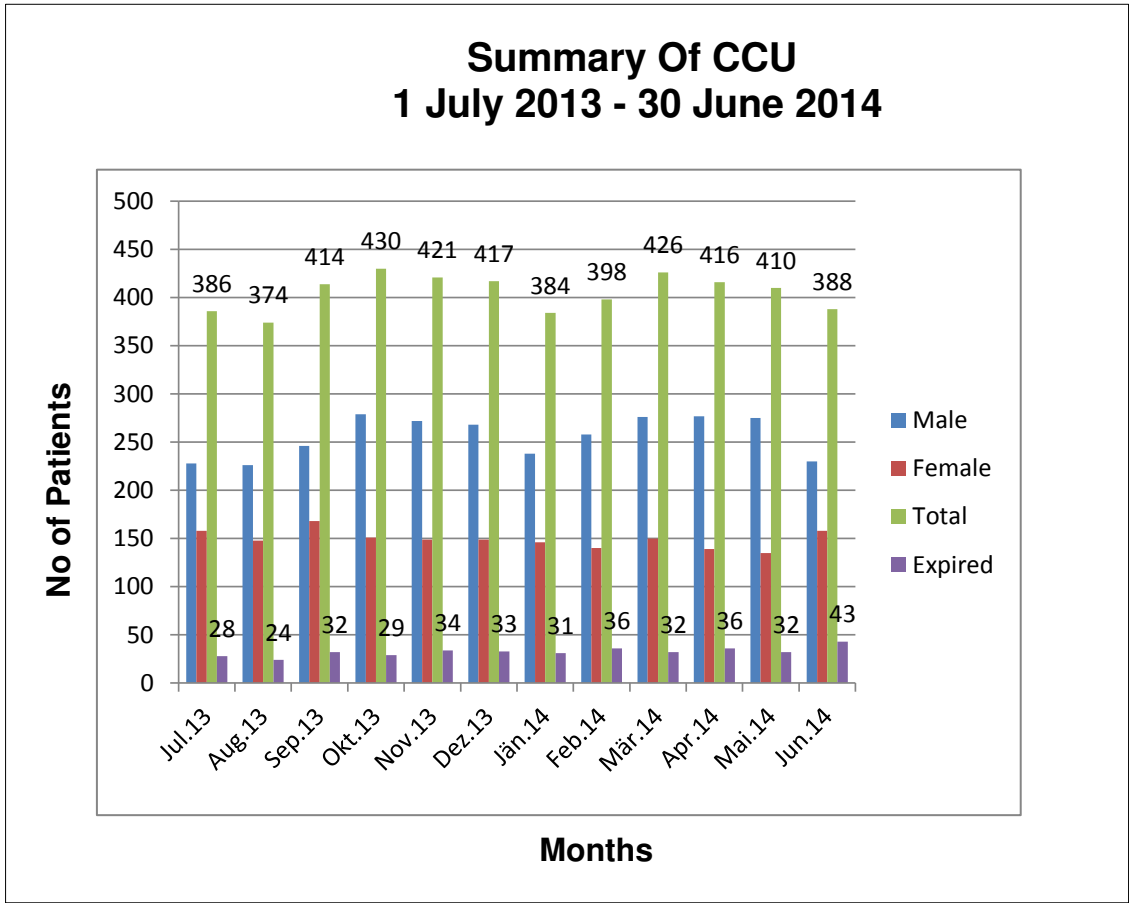
Summary of ETT

S.No	Month & Year	Male	Female	Total
1	Jul.13	58	21	79
2	Aug.13	55	9	64
3	Sep.13	79	24	103
4	Okt.13	74	12	86
5	Nov.13	87	14	101
6	Dez.13	69	27	96
7	Jän.14	88	25	113
8	Feb.14	84	28	112
9	Mär.14	20	15	35
10	Apr.14	98	23	121
11	Mai.14	95	27	122
12	Jun.14	90	29	119
Total		897	254	1151



Summary of CCU

S.No	Month & Year	Male	Female	Total	Expired	Male	Female
1	Jul.13	228	158	386	28	16	12
2	Aug.13	226	148	374	24	13	11
3	Sep.13	246	168	414	32	16	16
4	Okt.13	279	151	430	29	15	14
5	Nov.13	272	149	421	34	19	15
6	Dez.13	268	149	417	33	23	10
7	Jän.14	238	146	384	31	19	12
8	Feb.14	258	140	398	36	23	13
9	Mär.14	276	150	426	32	22	10
10	Apr.14	277	139	416	36	25	11
11	Mai.14	275	135	410	32	23	9
12	Jun.14	230	158	388	43	24	19
Total		3073	1791	4864	390	238	152



Summary of CCU

S.No	Month & Year	Vent Patients	Male	Female	Vent Exp	Male	Female
1	Jul.13	29	17	12	14	9	5
2	Aug.13	27	17	10	14	7	7
3	Sep.13	31	17	14	14	5	9
4	Okt.13	25	13	12	10	7	3
5	Nov.13	35	24	11	17	13	4
6	Dez.13	38	20	18	15	9	6
7	Jän.14	30	18	12	18	14	4
8	Feb.14	40	26	14	16	10	6
9	Mär.14	36	20	16	13	8	5
10	Apr.14	32	20	12	15	11	4
11	Mai.14	24	15	9	11	9	2
12	Jun.14	33	15	18	15	9	6
Total		380	222	158	172	111	61

